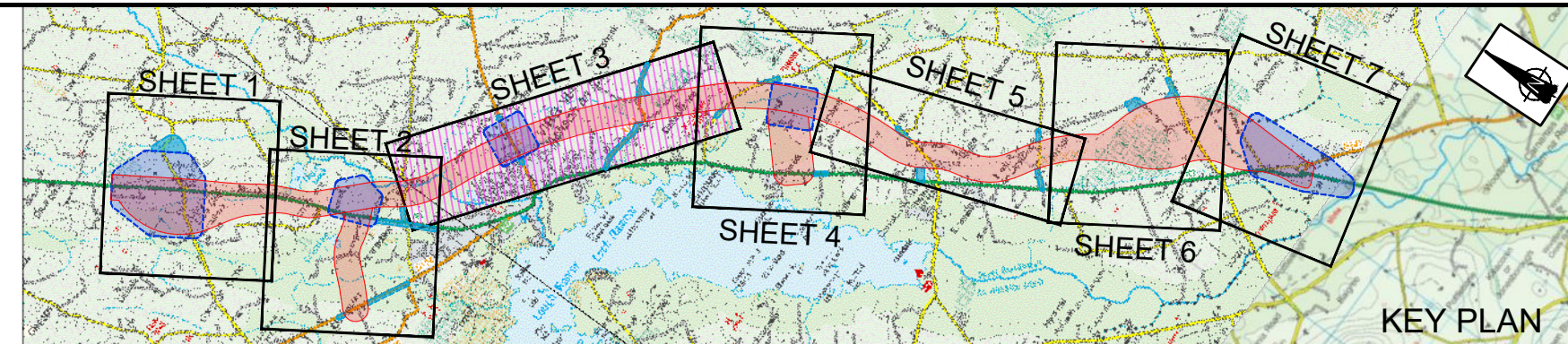


Type 2 Dual Carriageway Cross Section (See Note 8)

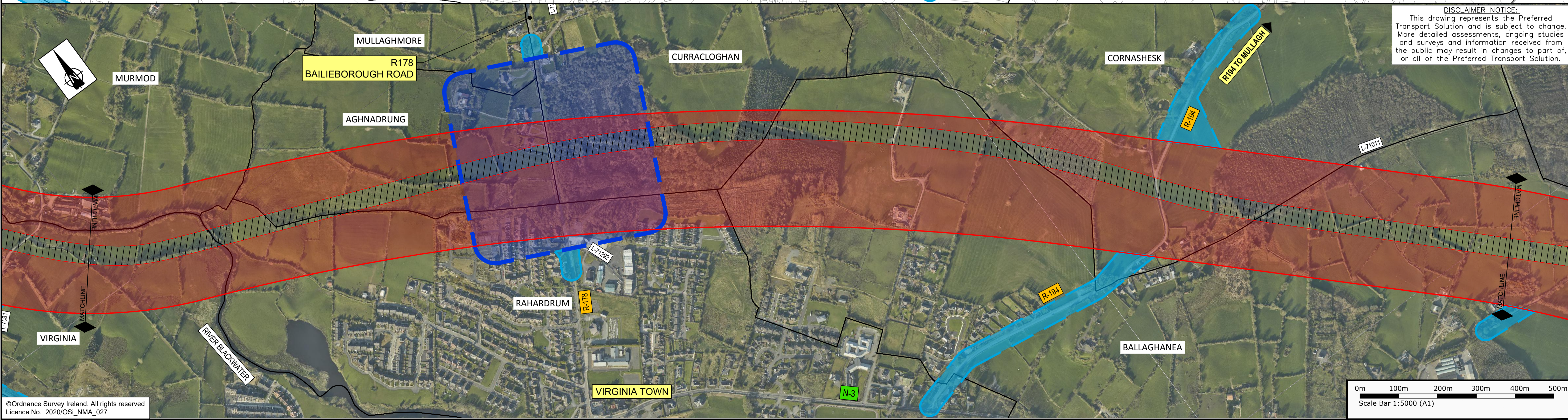
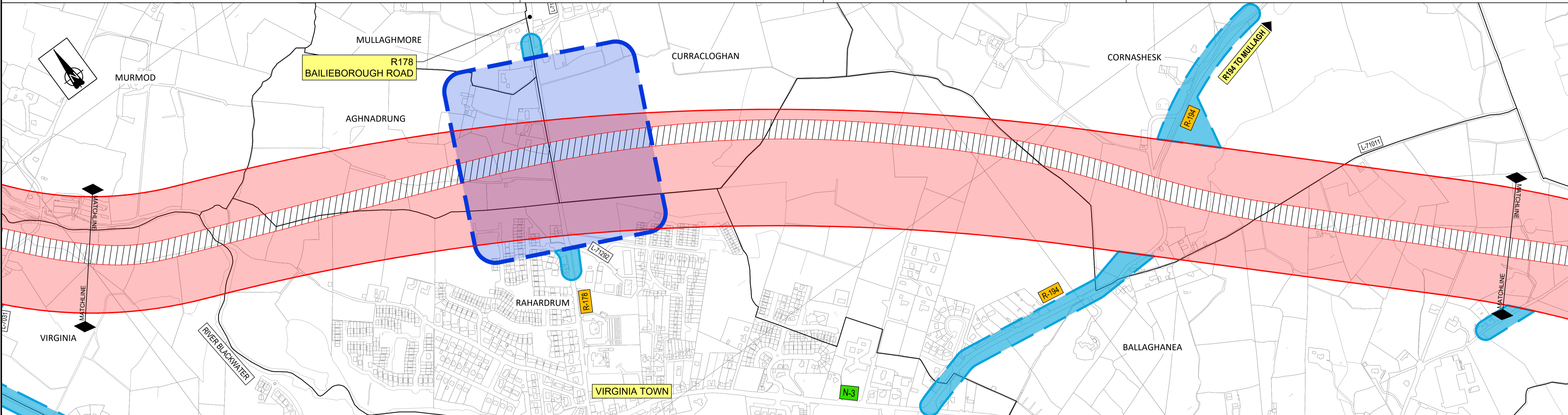
NOTES

1. This drawing represents the Preferred Transport Solution.
2. The Road-Based Corridor shown is typically 300m wide, with some localised widening to allow for further refinement of the design.
3. The final Scheme design may extend beyond the Corridors shown.
4. The exact position of the road alignment, junctions, side roads, active travel, drainage ponds, earthworks and other features will be finalised in Phase 3 (Design and Environmental Evaluation).
5. Where existing local roads are impacted, they may be severed, bridged, realigned or an alternative service road may be provided.
6. The corridor shown does not represent the actual width of the Scheme or the lands to be acquired. The exact details of the land take will be finalised in Phase 3.
7. The width of the indicative mainline alignment shown within the corridor does not represent the final width of the new road and is provided for demonstration purposes only. The required width will vary throughout the length of the route, and will be identified in Phase 3.
8. A Type 2 Dual Carriageway road cross-section has been initially selected for the identification of the Preferred Transport Solution. The final cross-section will be determined during Phase 3 and will include Active Travel (pedestrian and cycle) facilities along its full length.
9. The Active Travel infrastructure, Public Transport Improvements and Demand Management components of the Preferred Transport Solution are not depicted on this drawing.

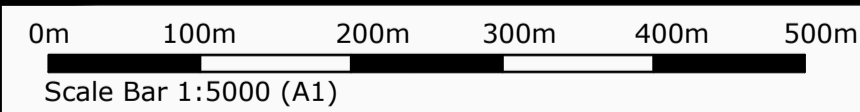


LEGEND

- Road-Based Corridor
- Indicative Mainline Alignment
- Indicative Junction Corridor
- Active Travel Corridor



DISCLAIMER NOTICE:
 This drawing represents the Preferred Transport Solution and is subject to change. More detailed assessments, ongoing studies and surveys and information received from the public may result in changes to part of, or all of the Preferred Transport Solution.



©Ordnance Survey Ireland. All rights reserved
 Licence No. 2020/OSI_NMA_027

Logos for TII (Transport Infrastructure Ireland), Rialtas na hÉireann Government of Ireland, and Tionscadal Éireann Project Ireland 2040.

Logos for Cavan County Council and comhairle chontae na mí meath county council.

Logo for BARRY TRANSPORTATION.

Notes:
 DO NOT SCALE, use figured dimensions only. All levels are referred to Ordnance Survey Datum, Main Head.
 This drawing is the property of Barry Transportation. It is a confidential document and must not be copied, used, or its contents divulged without prior written consent. This document should not be relied on or used in circumstances other than those for which it was originally prepared. Barry Transportation accepts no responsibility for this document to any other party other than the party by whom it was commissioned.

Rev.	Date	Drawn	Description	Chk'd	Appr.
001	20/04/23	RB	ISSUE FOR PUBLIC DISPLAY	EZ	TC

Project Title:	N3 VIRGINIA BYPASS	Status:	A2
Drawing Title:	PREFERRED TRANSPORT SOLUTION SHEET 3 OF 7	Rev:	C01
Designed: DRU	Drawn No. 19408-BT-01-ZZ-DR-C_4373_PO Corridor	Scale at A1:	1:5,000
Drawn: RB	Scale at A1:	Date:	APRIL 2023
Approved: TC	Date:		
Reviewed: EZ			

File Name: O:\18 Projects\19408 - N3 Virginia Bypass\001\WIP\DWG\19408-BT-01-ZZ-DR-C_4373_PO Corridor.dwg